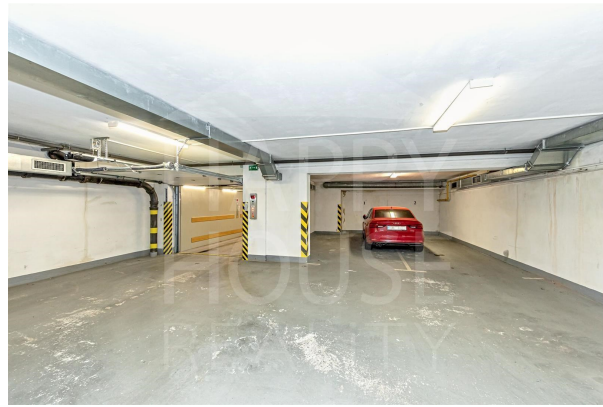


Garage space for rent (22 sqm) Prague 4 - Podolí, ul Sinkulova



2 500,00 CZK/ month

layout :		size :	
city :	Praha	town quarter :	Prague 4
district :	Podolí	street :	Sinkulova
number of rooms :		number of separate rooms :	
number of bathrooms :		number of separate toilets :	
number of toilets :		equipment :	
accessories :	elevator	other requirements :	
type of floor :		construction :	mixed
type of parking :	parking space	nearest public transport :	
infrastructure in the area :		PENB - Class :	

Garage space for rent in 1. PP Prague 4 - Podolí, ul Sinkulova. Underground garage parking - elevator access. The parking area is 22 sqm and includes one parking space for a car and a niche for 1-2 motorcycles. Entrance door 194 cm high and 220 cm wide, lift capacity 2500 kg, lift control by chip. For pedestrians, 2x locked doors.

COMPLEX REAL ESTATE SERVICES

- RENTAL AND SALE OF APARTMENTS AND HOUSES IN PRAGUE, STŘEDOČESKÝ AND LIBERECKÝ REGION ●
- SALE OF APARTMENT BUILDINGS AND DEVELOPMENT PROJECTS ● LAND ● COMMERCIAL PROPERTY ●

- PROPERTY AND FACILITY MANAGEMENT ●