

Rent an attic, maisonette one-bedroom apartment (100 sqm) on the 5th floor, Prague 1 - Josefov, Maiselova Street

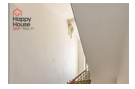
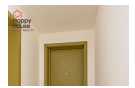
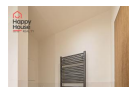
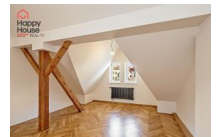


40 000,00 CZK/ month

+ utilities CZK 5.000 inc el, deposit 2 rents

layout :	2+kk - 1 bedroom	size :	100
city :	Praha	town quarter :	Prague 1
district :	Josefov	street :	Maiselova
number of rooms :		number of separate rooms :	
number of bathrooms :		number of separate toilets :	
number of toilets :		equipment :	
accessories :		other requirements :	maisonette
type of floor :		construction :	brick
type of parking :	None	nearest public transport :	
infrastructure in the area :		PENB - Class :	G - Extremely wasteful

We offer for rent an unfurnished attic duplex one-bedroom apartment on the 5th floor of a brick building with an elevator after reconstruction in the prestigious district of Prague 1 - Josefov. The apartment is completely newly built, created by the reconstruction of attic spaces. The apartment offers an entrance hall, a spacious living room with a kitchenette and a bedroom. The kitchen has a custom-built kitchen unit with built-in appliances - hob, electric oven, dishwasher, microwave oven, and fridge-freezer. The bathroom has a shower and toilet. There is air conditioning throughout the apartment. Parquets and tiles. There is a gas boiler room in the house. Internet connection and SAT TV available. Street parking - zones. The apartment is surrounded by all civic amenities - restaurants, shops, services, cafes, culture, and monuments. Nearby is the Old Town Square, Pařížská Street, or Alšovo Embankment with a park. Metro station A Staroměstská about 2 min walk, tram stop about 3 min walk from the house. Utility fees are paid separately, a security deposit of 2 months' rent. The real estate agency commission is 1 month's rent + VAT. Energy label is not available, class G is stated.



COMPLEX REAL ESTATE SERVICES

- RENTAL AND SALE OF APARTMENTS AND HOUSES IN PRAGUE, STŘEDOČESKÝ AND LIBERECKÝ REGION •
- SALE OF APARTMENT BUILDINGS AND DEVELOPMENT PROJECTS • LAND • COMMERCIAL PROPERTY •