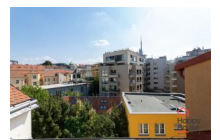
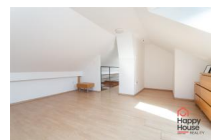
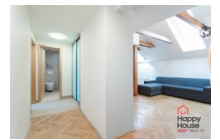


Beautiful, partially furnished duplex two-bedroom attic loft (70 sqm) on the 3rd floor with parking in Prague 3 - Žižkov, Roháčova street



30 000,00 CZK/ month

inc parking space + utilities CZK 6.500 incl. energies, deposit 1,5 rent

layout :	3+kk - 2 bedrooms	size :	70
city :	Praha	town quarter :	Prague 3
district :	Žižkov	street :	Roháčova
number of rooms :	3	number of separate rooms :	
number of bathrooms :		number of separate toilets :	
number of toilets :		equipment :	
accessories :		other requirements :	
type of floor :		construction :	brick
type of parking :	outdoor private	nearest public transport :	
infrastructure in the area :		PENB - Class :	G - Extremely wasteful

We offer to rent a beautifully designed attic duplex two-bedroom loft with a living area of 70 sqm located on the 3rd floor of a brick building near the Vítkov hill in Žižkov, Prague 3. The apartment is partially furnished and features an entrance hall, a living room with a kitchenette and wooden stairs, a separate bedroom, and a bathroom. The stairs lead up to a floor with an open landing and another bedroom. The kitchenette is equipped with a refrigerator with freezer, dishwasher, and a kitchen unit with built-in appliances - ceramic hob, electric and microwave oven. Washing machine at your disposal too. In the newly renovated bathroom, you will find a shower and toilet. Floating floors, parquets and tiles. The apartment includes a TV, cable TV, and telephone; the tenant pays for the internet. Roof windows provide plenty of light and exposed wooden beams add to the apartment's picturesqueness. Parking in the yard for one car is included in the rent, otherwise on the street - zone. View from the apartment to a quiet one-way street and to a courtyard with mature greenery. Great living close to the extensive Vítkov Park with a bike path, near Parukářka Park. All amenities are available locally - plenty of shops, services, bars, and restaurants in the area. The bus stops Rokycanova and Tachovské náměstí are about 1 minute walk from the house, then a 5-minute ride to the C and B metro stations Florenc. Utility fees are paid separately, a security deposit equal to 1,5 month rent is

COMPLEX REAL ESTATE SERVICES

- RENTAL AND SALE OF APARTMENTS AND HOUSES IN PRAGUE, STŘEDOČESKÝ AND LIBERECKÝ REGION ●
- SALE OF APARTMENT BUILDINGS AND DEVELOPMENT PROJECTS ● LAND ● COMMERCIAL PROPERTY ●

- PROPERTY AND FACILITY MANAGEMENT ●

required. Real estate agency commission in the amount of one month's rent + VAT. The energy performance certificate is not available, therefore it is listed as class G.

COMPLEX REAL ESTATE SERVICES

- RENTAL AND SALE OF APARTMENTS AND HOUSES IN PRAGUE, STŘEDOČESKÝ AND LIBERECKÝ REGION ●
 - SALE OF APARTMENT BUILDINGS AND DEVELOPMENT PROJECTS ● LAND ● COMMERCIAL PROPERTY ●
-

- PROPERTY AND FACILITY MANAGEMENT ●