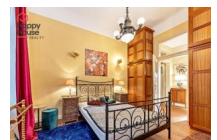
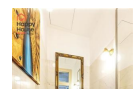
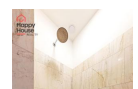
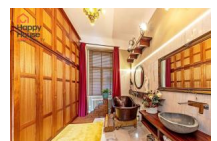


Rental of a luxury fully furnished apartment 3+1 (129 sqm) on the first floor with a balcony (3sqm) – Prague 1, New Town, view of Žofín and the Vltava River.



90 000,00 CZK/ month

+ utilities CZK 6.000 + energies, deposit 3 rents

layout :	3+1 - 2 bedrooms	size :	132
city :	Praha	town quarter :	Prague 1
district :	Nové Město	street :	Masarykovo nábřeží
number of rooms :		number of separate rooms :	
number of bathrooms :		number of separate toilets :	
number of toilets :		equipment :	
accessories :	balcony, elevator	other requirements :	
type of floor :		construction :	brick
type of parking :	None	nearest public transport :	
infrastructure in the area :		PENB - Class :	G - Extremely wasteful

We offer for rent a spacious and elegant apartment with a layout of 3+1 and a total area of 129 m², located on the 1st floor with an elevator in a representative brick building in one of the most sought-after areas of Prague 1 - New Town, right by the Vltava river with a beautiful view of Žofín. Apartment Description The apartment has undergone a complete renovation, focusing on the quality of workmanship and the use of above-standard materials. The highlight of the interior is a spacious living room with functional fireplace stoves, which connects to a fully equipped kitchen - American fridge with freezer, gas hob, electric oven, and wine cooler. There are two separate bedrooms and two bathrooms - one with a shower and the other with both a bathtub and shower. Comfort is provided by a gas boiler located in the apartment, underfloor heating in the bathrooms, and radiators in the other rooms. The apartment also includes a balcony with a view of the Vltava River. The interior is complemented by solid wooden floors, granite tiles, and marble cladding. Internet and TV connection are standard. Location Exceptional location with all civic amenities in the immediate vicinity - shops, services, restaurants, cafes, and cultural institutions. The tram stops National Theatre and Myslíkova are just a few steps from the house, and the metro B National Avenue is reachable by foot in about 8 minutes. Rental Terms Monthly rent: 90,000 CZK Charges including internet: 6,000

COMPLEX REAL ESTATE SERVICES

- RENTAL AND SALE OF APARTMENTS AND HOUSES IN PRAGUE, STŘEDOČESKÝ AND LIBERECKÝ REGION ●
- SALE OF APARTMENT BUILDINGS AND DEVELOPMENT PROJECTS ● LAND ● COMMERCIAL PROPERTY ●

CZK/month Energy (gas and electricity): transfer to the tenant Deposit: 3 months' rent Real estate agency commission: 1 month's rent + VAT Energy performance of the building: class G (label not yet provided) This apartment is ideal for those seeking representative and comfortable living in the heart of Prague with extraordinary views, luxurious equipment, and a remarkable atmosphere.

COMPLEX REAL ESTATE SERVICES

- RENTAL AND SALE OF APARTMENTS AND HOUSES IN PRAGUE, STŘEDOČESKÝ AND LIBERECKÝ REGION ●
- SALE OF APARTMENT BUILDINGS AND DEVELOPMENT PROJECTS ● LAND ● COMMERCIAL PROPERTY ●