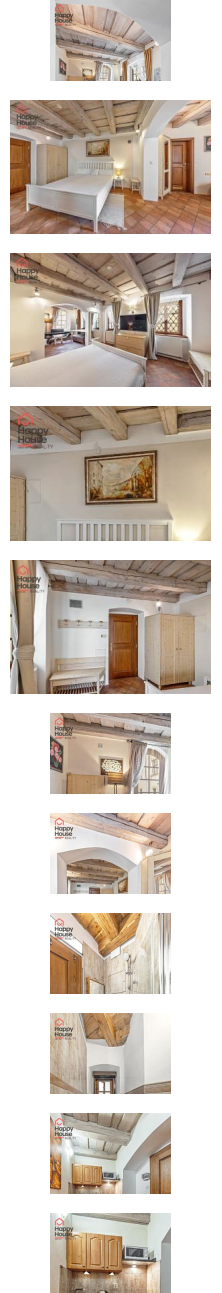


Renting a romantic apartment 1+1 (33m²) on the ground floor, Prague 1 - Malá Strana, Všešrdova Street.



25 000,00 CZK/ month

+ utilities CZK 4.700 + el CZK 800, deposit 2 rents

layout :	1+1 - Studio	size :	33
city :	Praha	town quarter :	Prague 1
district :	Malá Strana	street :	Všešrdova
number of rooms :		number of separate rooms :	
number of bathrooms :		number of separate toilets :	
number of toilets :		equipment :	
accessories :		other requirements :	
type of floor :		construction :	brick
type of parking :	None	nearest public transport :	
infrastructure in the area :		PENB - Class :	G - Extremely wasteful

We offer a rental (possibility for less than 12 months, e.g., for Erasmus students) of a unique romantic 1+1 apartment located on the ground floor of a historically sensitive reconstructed building on Všešrdova street, just steps away from Tyrš House and Kampa. The apartment is fully furnished and charms with the atmosphere of old Prague – wooden ceilings, exposed beams, and Italian terracotta tiles create an irreplaceable genius loci. Layout and Equipment • Furnished living area, separate kitchenette • Kitchen unit: electric double burner, refrigerator, dishwasher, microwave, electric kettle, coffee maker • Bathroom with a shower and toilet • Washing machine located in the kitchenette • Floors: Italian terracotta tiles • Wooden ceilings and exposed beams – a significant aesthetic element • Heating by radiators, central boiler room in the building Character and Atmosphere The apartment is atypical and feels very intimate and authentic. The view faces east onto Všešrdova street where traffic is minimal and the atmosphere of old Malá Strana is pleasant. Parking • Possible to rent a parking space in Tyrš House • On-street parking within residential zones Location – Malá Strana One of the most beautiful and quietest parts of Prague, ideal for lovers of historic atmosphere and romantic nooks. Within walking distance: • Kampa, Petřín Gardens, Charles Bridge • Tram lines Újezd / Hellichova • Shops, cafes, restaurants, bakeries • Tyrš House – sports center • Vltava river and riverbank for walks

COMPLEX REAL ESTATE SERVICES

- RENTAL AND SALE OF APARTMENTS AND HOUSES IN PRAGUE, STŘEDOČESKÝ AND LIBERECKÝ REGION •
- SALE OF APARTMENT BUILDINGS AND DEVELOPMENT PROJECTS • LAND • COMMERCIAL PROPERTY •

Transport Accessibility: • Tram 2 minutes on foot • Metro B – Národní třída or Anděl within commuting distance • Fast connections to the city center and Prague 5 Rental Conditions • Rent: 25,000 CZK/month + charges 4,700 CZK + electricity 800 CZK • Deposit: 2 months' rent • Move-in: immediately or by agreement • The apartment is fully furnished

COMPLEX REAL ESTATE SERVICES

- RENTAL AND SALE OF APARTMENTS AND HOUSES IN PRAGUE, STŘEDOČESKÝ AND LIBERECKÝ REGION •
- SALE OF APARTMENT BUILDINGS AND DEVELOPMENT PROJECTS • LAND • COMMERCIAL PROPERTY •