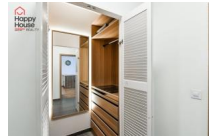


For Rent: Furnished 2+kk Apartment (65 sqm) with Balcony (7 sqm), Cellar (4 sqm) and Garage Parking Space in the Home Třebešín Residence – Prague 10, Strašnice, Zvěřinova Street



26 000,00 CZK/ month

+ utilities CZK 5.000 + energies CZK 1.500 + garage space CZK 2.000, deposit 2 rents

layout :	2+kk - 1 bedroom	size :	76
city :	Praha	town quarter :	Prague 3
district :	Strašnice	street :	Zvěřinova
number of rooms :		number of separate rooms :	
number of bathrooms :		number of separate toilets :	
number of toilets :		equipment :	
accessories :	balcony, cellar, elevator	other requirements :	
type of floor :		construction :	mixed
type of parking :	garage	nearest public transport :	
infrastructure in the area :		PENB - Class :	B - Very economical

We offer for long-term rent a fully furnished 2+kk apartment with a total area of 65 sqm, featuring a balcony (7 sqm), cellar (4 sqm) and garage parking space. The apartment is located on the 8th floor of the modern Home Třebešín residential development in Prague 10 – Strašnice. The building offers a lift and underground parking. The apartment comprises an entrance hall with a built-in wardrobe and a separate walk-in closet, a spacious living room with a kitchenette and direct access to the balcony, a bedroom and a bathroom. The kitchen is equipped with built-in appliances including a fridge with freezer, ceramic cooktop, electric oven, dishwasher and extractor hood. The bathroom features a bathtub, toilet, heated towel rail and washing machine. The floors are finished with a combination of laminate flooring and ceramic tiles. Heating is provided by central district heating with radiators. A private cellar unit is included with the apartment. A garage parking space can be rented for an additional CZK 2,000 per month, although the apartment can also be rented without it. The apartment offers pleasant views of the nearby park and surrounding greenery. The location provides peaceful living close to the Třebešín forest park and velodrome, offering numerous opportunities for sports and leisure activities. Full civic amenities are available in the area, including a kindergarten, shops, restaurants and children's playgrounds. A bus stop is located just a few minutes'

COMPLEX REAL ESTATE SERVICES

- RENTAL AND SALE OF APARTMENTS AND HOUSES IN PRAGUE, STŘEDOČESKÝ AND LIBERECKÝ REGION •
- SALE OF APARTMENT BUILDINGS AND DEVELOPMENT PROJECTS • LAND • COMMERCIAL PROPERTY •

walk from the building, providing convenient access to metro line A – Želivského (approximately 6 minutes) and to Prague city centre or Florenc station (approximately 16 minutes). Utilities are paid separately. The refundable security deposit equals two months' rent. The agency commission amounts to one month's rent + VAT. The building's energy performance is estimated to be class B. Please note that the furniture currently in the apartment differs from that shown in the photographs. The apartment is being rented with different furnishings than those depicted in the listing photos.

COMPLEX REAL ESTATE SERVICES

- RENTAL AND SALE OF APARTMENTS AND HOUSES IN PRAGUE, STŘEDOČESKÝ AND LIBERECKÝ REGION ●
- SALE OF APARTMENT BUILDINGS AND DEVELOPMENT PROJECTS ● LAND ● COMMERCIAL PROPERTY ●