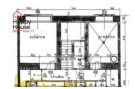


Rental of renovated commercial space (65 sqm) in the basement, Prague 4 - Nusle, Jaromírova street.



8 000,00 CZK/ month

+ utilities CZK 750 + el. CZK 3000, deposit CZK 15,000

layout :		size :	
city :	Praha	town quarter :	Prague 2
district :	Nusle	street :	Jaromírova
number of rooms :		number of separate rooms :	
number of bathrooms :		number of separate toilets :	
number of toilets :		equipment :	
accessories :	elevator	other requirements :	
type of floor :		construction :	brick
type of parking :	None	nearest public transport :	
infrastructure in the area :		PENB - Class :	G - Extremely wasteful

We are renting out a non-residential space suitable for storage with a small window in the basement of a brick building with an elevator in Prague 4, Nusle. The space is unheated, but this is negotiable. The floors are concrete and can be modified after discussion with the new tenant. A toilet is located next door in the entrance where there is a cleaning room. Street parking available – zones. Excellent accessibility to the center, the Svatoplukova tram stop is about a minute's walk from the house, then it's a 5-minute ride to Karlovo náměstí on metro line B or a 5-minute walk to Vyšehrad on metro line C. Located directly next to Folimanka Park and close to Vyšehrad Park. All community amenities are available on-site. An energy performance certificate is not available, so it is listed as class G. Utility fees are paid separately, with the security deposit of 15,000 CZK. Real estate agency fee is CZK 15,000 + VAT.

COMPLEX REAL ESTATE SERVICES

- RENTAL AND SALE OF APARTMENTS AND HOUSES IN PRAGUE, STŘEDOČESKÝ AND LIBERECKÝ REGION ●
- SALE OF APARTMENT BUILDINGS AND DEVELOPMENT PROJECTS ● LAND ● COMMERCIAL PROPERTY ●